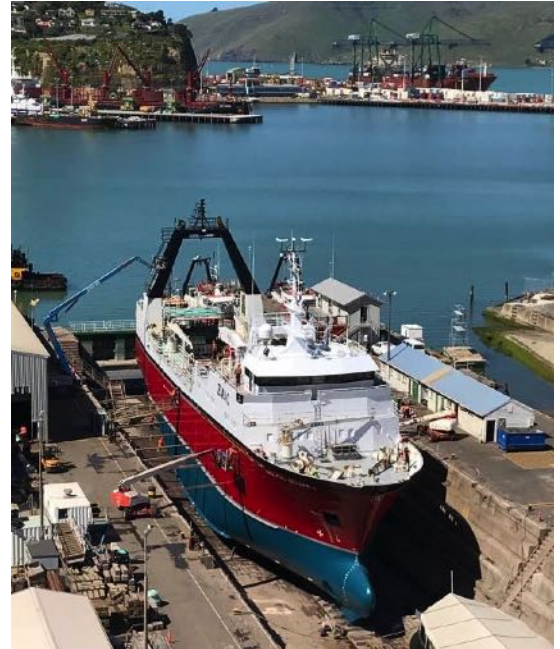


# 2017 HIGHLIGHTS

## MARINE

- Carried out major upgrades and repairs on the trawlers Albatross II, Rehua and Amaltal Columbia.
- Undertook main engine work and machined a number of cylinder liner landings in-situ for Sanford in Timaru, using our Chris Marine portable grinding machine.
- Carried out a propeller shaft survey on the Nelson slipway for Talley's.
- Completed a total of 20 surveys and refits to a variety of vessels in the dry dock.



Dry dock survey – Trawler Amaltal Columbia

## BOILERS

- Installed & commissioned a 4MW gas fired boiler for NIG Nutritionals in Pukekohe.
- Installed & commissioned an 8MW diesel fired boiler for the Oceania milk processing plant in Glenavy.
- Manufactured a 4MW wet sawdust fired boiler for the Stoneyhurst timber plant at Belfast.



4 MW wood waste boiler under construction

## INDUSTRIAL

- Installed a new parcel sorting plant at the NZ Couriers site near Christchurch airport.
- Set up & commissioned a temporary energy centre comprising of 6 containerised boilers to run Christchurch hospital while repairs are carried out on the main steam lines from the existing boiler house.
- Assisted Skellerup with the installation of machinery at their new plant at Wigram.
- Completed the overhaul of the first of two sludge presses at the Christchurch waste water plant.



Parcel sorting plant installation

[www.lytteng.co.nz](http://www.lytteng.co.nz)

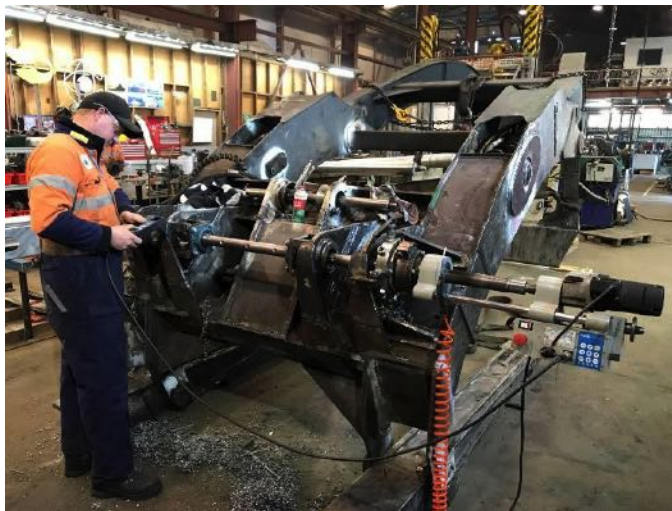
# 2017 HIGHLIGHTS

## FABRICATION

- Manufactured & installed a Maxitherm D20 9.5M3 deaerator for the Alliance plant at Smithfield.
- Completed the prefabrication of columns, bracing & an entrance structure for the Novotel at Christchurch airport.



Structural columns – Novotel Christchurch



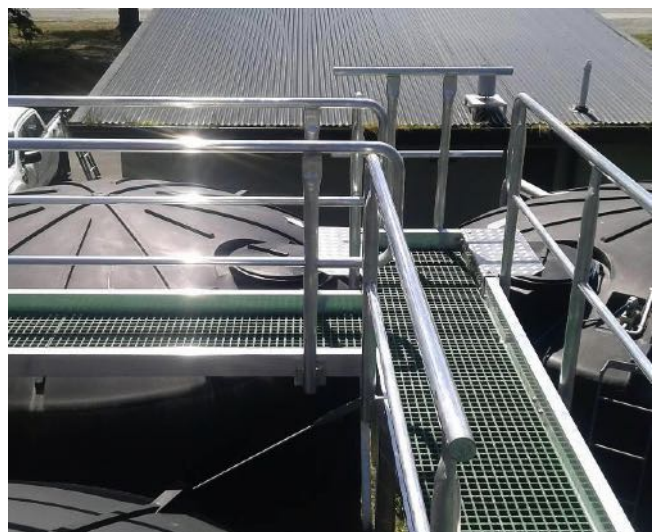
Portable line boring – log grab arm

## FITTING & MACHINING

- Re-machined the 1.8M diameter seal faces on a timber treatment autoclave onsite for Nelson Forests.
- Carried out a major overhaul on a water damaged rubber mill for Skellerup.
- Undertook a complete rebuild of a pre-breaker for Silver Fern Farms.

## GUARDWAY ALUMINIUM

- Manufactured 28 wine silo platforms for Perno Rickard in Auckland on behalf of Mercer Stainless.
- Manufactured platforms and ladders for Mercer Stainless, for their milk silos at Edendale & Matura.
- Manufactured two large 6.0 x 3.5M aluminium hatch covers for the Avonside waste water pumping station in Christchurch.



Tank access platform – Ohoka waste water plant