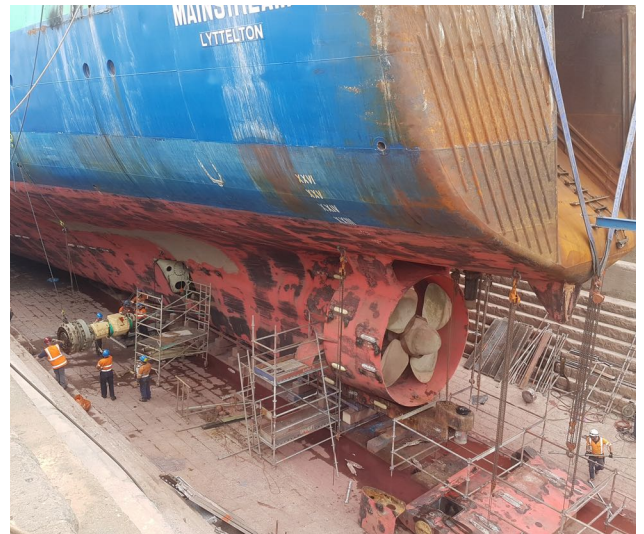


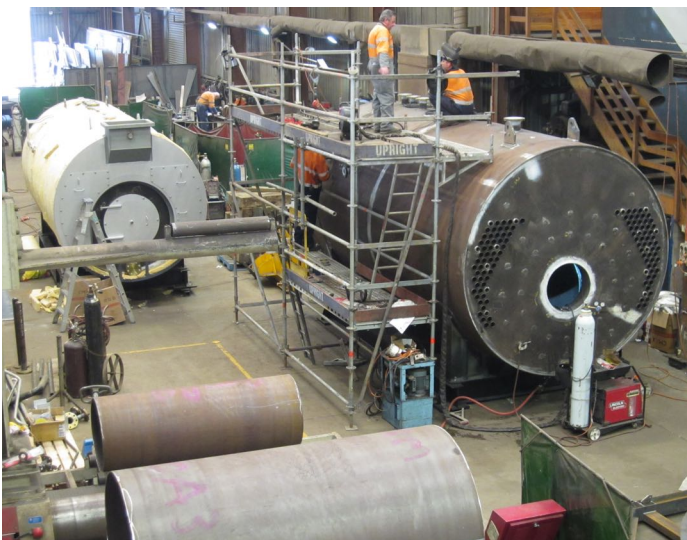
# 2016 HIGHLIGHTS

## MARINE

- Completed a major refurbishment of the Russian trawler "Independent" including 15T of new deck & hull plate, rebuild of the fish pounds and overhaul of the 25T prop shaft & two 18T main trawl winches.
- Undertook overall project & health & safety management for the dry dockings of the San Discovery & San Aspiring.
- Removed the 7.5T CPP from the trawler Mainstream through a hole cut in the side of the vessel to carry out a full overhaul.



CPP removal – Trawler Mainstream



4 & 8 MW boilers under construction

## INDUSTRIAL

- Carried out numerous boiler surveys on boilers over 1MW in output throughout NZ.
- Carried out a major overhaul on the coal grate on the 6MW boiler at Juice Products in Timaru.
- Assisted Skellerups to move their machinery from Woolston to their new plant at Wigram.
- Started the dismantling and overhaul of the 2 sludge presses at the Christchurch waste water plant.

## BOILERS

- Manufactured a 4MW gas fired boiler for New Image Pharmaceuticals in Pukekohe.
- Manufactured an 8MW diesel fired boiler for the Oceania milk processing plant in Glenavy.
- Started manufacture of a 1MW diesel fired boiler for the new Skellerup plant in Christchurch.



Sludge press overhaul – Waste Water Plant

[www.lytteng.co.nz](http://www.lytteng.co.nz)