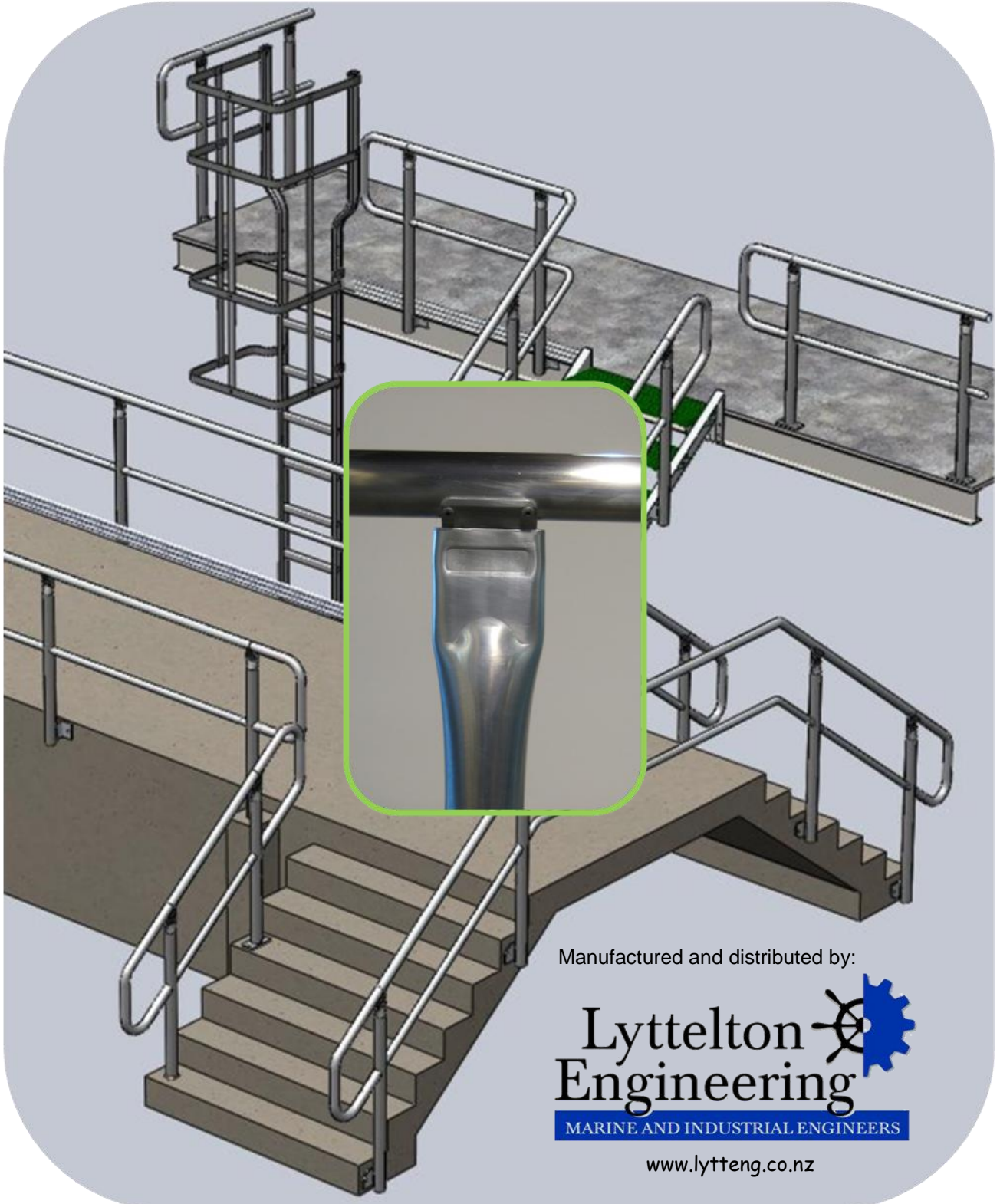


# GUARDWAY

Aluminium handrail, stairway and walkway system.

★ STRONG ★ LIGHT ★ VERSATILE ★ PREFABRICATED



Manufactured and distributed by:

**Lyttelton Engineering**  
MARINE AND INDUSTRIAL ENGINEERS

[www.lytteng.co.nz](http://www.lytteng.co.nz)

# GUARDWAY

Guardway is a modular access system comprising handrailing, stairway and walkway components, all made from lightweight, corrosion-resistant aluminium.

## WHY SHOULD YOU USE GUARDWAY?

### IT IS STRONG

Guardway has been designed to meet the requirements of the SAA Code for Fixed Platforms, Walkways, Stairways and Ladders, AS1657 – 1992 (endorsed by SANZ) and NZS4203 – 1992 loading code.

Guardway has been fully tested and provides safety and security in elevated installations.

### IT IS LIGHT

All the components are made from aluminium extrusions. They are lightweight and can be easily handled by one man, reducing transport and site handling costs.

### IT IS ECONOMICAL TO MAINTAIN

The aluminium alloys used, resist corrosion by a

wide range of industrial chemicals and environments, thus reducing the need for maintenance and replacement.

### IT IS SIMPLE TO INSTALL

Only a few simple tools are needed to install Guardway. Site welding is not required. It is easy to cut rails and walkway beams with a hand hacksaw.

### IT IS VERSATILE

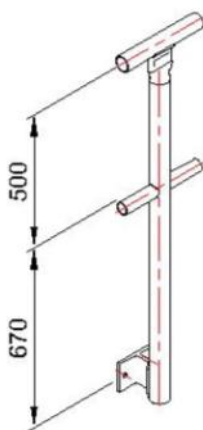
The large number of standard pre-fabricated components allows the system to be used in most applications without additional on site work. Where the handrail replaces an existing installation the posts can be bolted to existing steel or concrete supporting structures.

#### POSTS

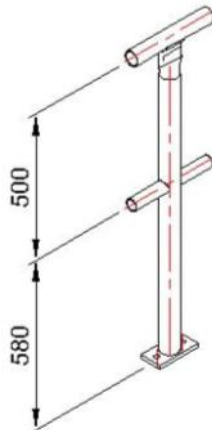
60mm O.D. – 3mm wall thickness.  
Brackets factory welded to posts.  
Handrail connector factory fixed to post.  
Predrilled fixing holes and kneerail holes.

#### RAILS

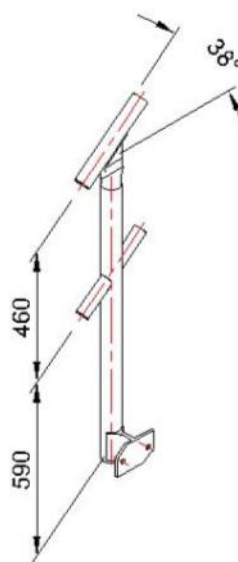
Handrail 50mm O.D. - 3mm wall thickness  
Kneerail 40mm O.D. – 2mm wall thickness  
Stock lengths 5 metres



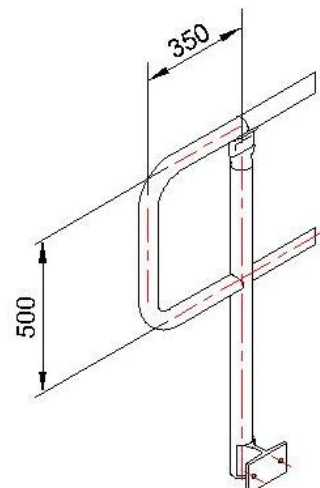
Side mounted post



Foot mounted post

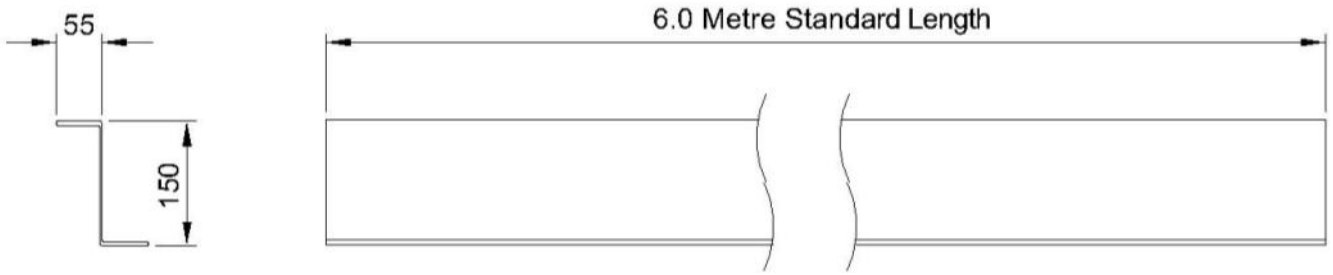


Stair post



Handrail return bend

# Walkway Beams



## RECOMMENDED SPANS

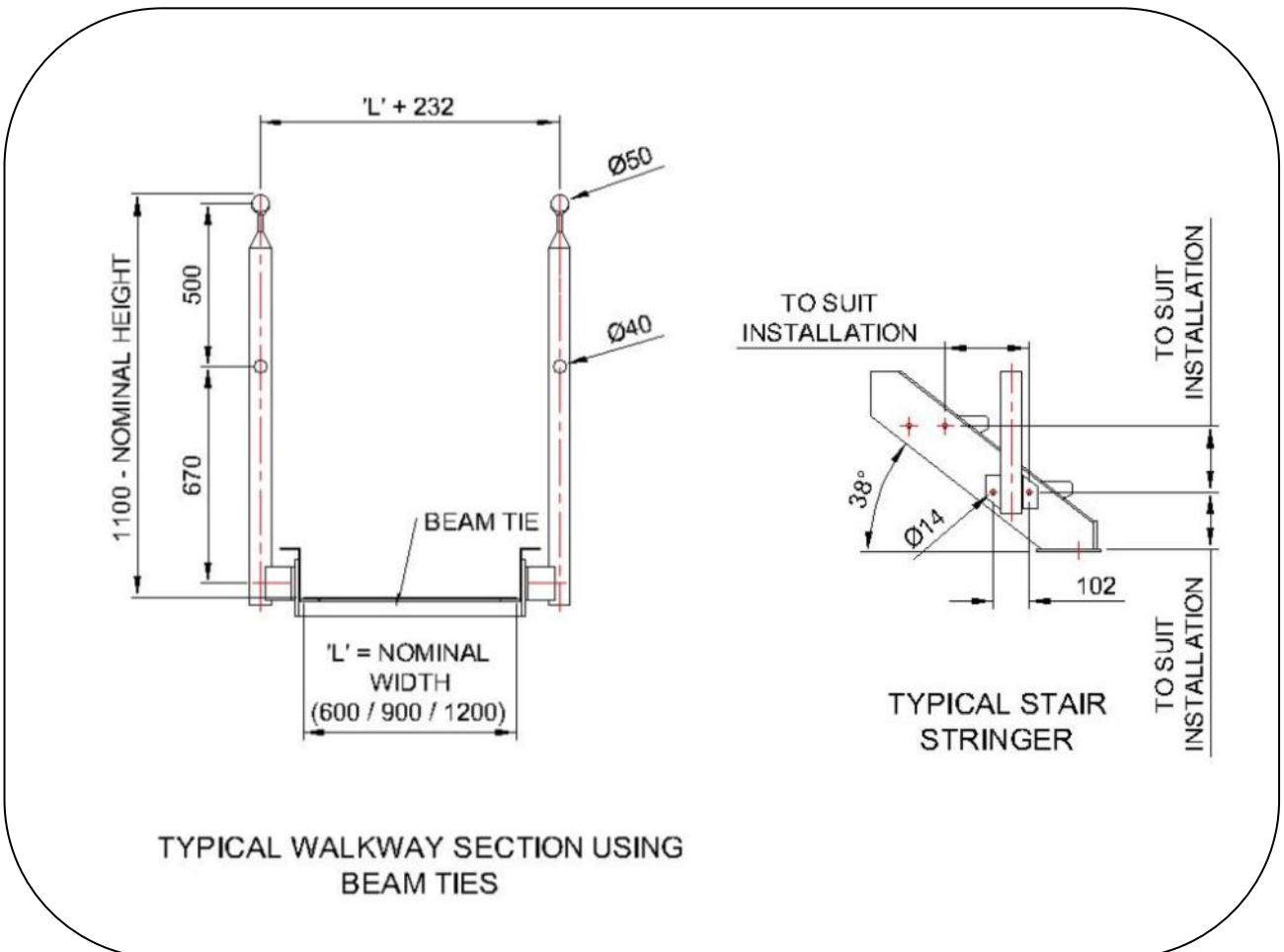
There are two situations for walkway installation:

1. Simply supported between two support points.
2. Continuous over more than one span.

Where the walkway is continuous over more than one span, larger spans are possible. The spans for different walkway widths are shown in the table at right:

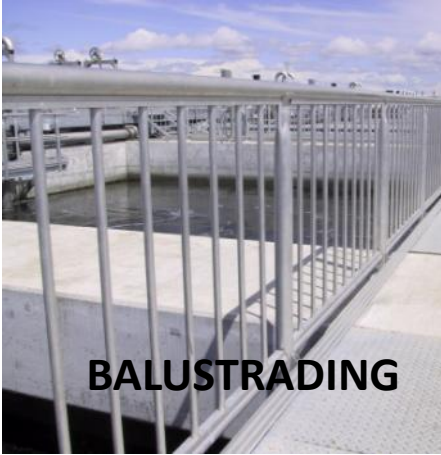
MAXIMUM WALKWAY SPANS				
Walkway nominal width	Simply supported	Load at support point	Continuous over 2 or more spans	Load at support point
600mm	4000mm	8kN	6000mm	11kN
900mm	3000mm	8kN	4000mm	11kN
1200mm	2000mm	8kN	3000mm	11kN

Maximum spans shown in the table are based on a deflection limit of span/180. The table also shows the design load to be carried by the support points and can be used for design purposes.





# GUARDWAY



**BALUSTRADING**



**SILO ACCESS**



**ROOF ACCESS**



**TANK ACCESS**



**WASTE WATER PLANTS**



**HANDRAILS**



**PLATFORMS**

**STAIRS**



**DECKING**

**Lyttelton Engineering**  
MARINE AND INDUSTRIAL ENGINEERS

Dockside Godley Quay, PO Box 176 Lyttelton  
Phone: (03) 328 8105 Fax (03) 328 7289  
Email: [enquiries@lytteng.co.nz](mailto:enquiries@lytteng.co.nz), [www.lytteng.co.nz](http://www.lytteng.co.nz)